

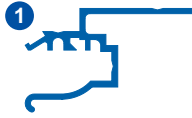


Ret hinge for using SIGNPRO face frames on non-SIGNPRO cabinets

**BSH7002**

- BSHF-R680
- BSHF-S350
- BSHF-W850
- BSH7002

**BSH7002**



Cutting Tools



Measure extrusions to sign overall length and height, plus 1/4" [ 5 mm].

Install the neoprene weather seal gasket along the cabinet face perimeter

Drill along the sign top for hinging screws, and along the bottom for locking screws, then mount the assembled face frame on to cabinet.

Common components

**2105**



Neoprene gasket weather seal used with all Signpro cabinets

**2106**



Stainless set screws 1/4" x 3/4" used as frame hinging and locking screws

**2106A**



Robertson S.S. screws #10 x 24 x 11/16" used as alternative to **2106**

Assembly Tools



Cabinet Extrusions For custom finishes call your distributor

Product No	Description	Finish	Pack Qty.
<b>BSH7002</b>	Rethinge	Mill finish	8

Common system components

<b>2105</b>	Weather seal gasket (sold per 50')	20
<b>2106</b>	Stainless set screws 1/4" x 3/4"	100
<b>2106A</b>	Robertson S.S. screw #10 x 24 x 11/16"	100